

The Keir

3 bedroom mid & end terrace



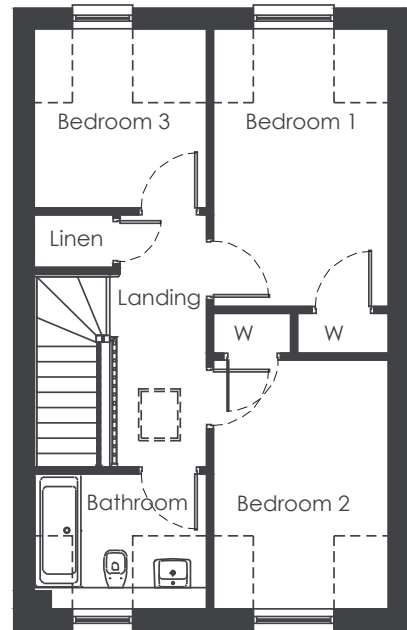
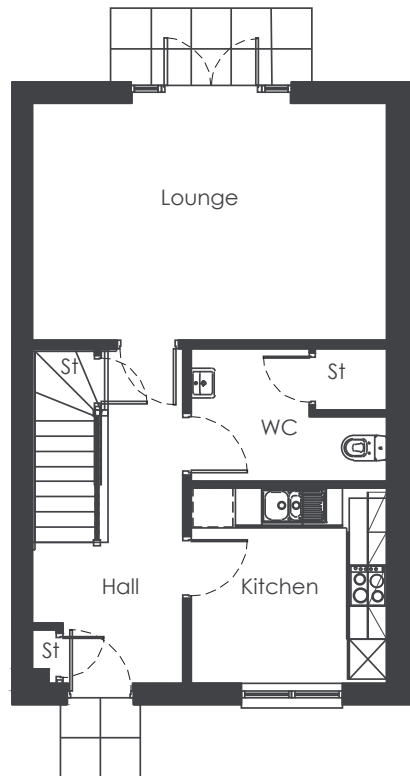
**KIRKWOOD
HOMES**

bringing quality to life

The Keir

ground and first floor room dimensions

Floor Area = 89 m² / 958ft²



Ground Floor

Lounge	5.27 x 3.52m	(17'3" x 11'7")
Kitchen / Dining	2.90 x 2.90m	(9'6" x 9'6")
WC	2.90 x 1.95m	(9'6" x 6'5")

First Floor

Bedroom 1	2.59 x 4.12m	(8'6" x 13'6")
Bedroom 2	2.59 x 3.70m	(8'6" x 12'12")
Bedroom 3	2.55 x 2.65m	(8'4" x 8'8")
Bathroom	2.55 x 2.00m	(8'4" x 6'7")

call 07894 595687 to arrange an appointment or visit www.kirkwoodhomes.co.uk

Terms and Conditions of Purchase: Reservation fee £1,000. Deposit £5,000 payable on conclusion of Missives. Missives to be concluded within 14 days of date of reservation. Balance payable on date of entry. The information contained within this brochure is for illustration purposes only, is subject to change and should be treated as general guidance and cannot be relied upon as accurately describing any of the specified matters prescribed by and order made under the Property Misdescription Act 1991. The contents constitute neither a contract nor a warranty. Prospective purchasers are advised to contact a Kirkwood Homes Sales Representative to confirm all details. Dimensions indicated are accurate to within ± 50 mm, taken at widest point within each room. The floor plan layout may be handed oppositely or have minor variations to that shown. Exterior finishes and treatments may vary from those shown. Refer to the development specification for further information on fittings and finishes. © 2016 Kirkwood Homes Ltd, Kirkwood Business Park, Sauchen, Inverurie, Aberdeenshire, AB51 7LE.